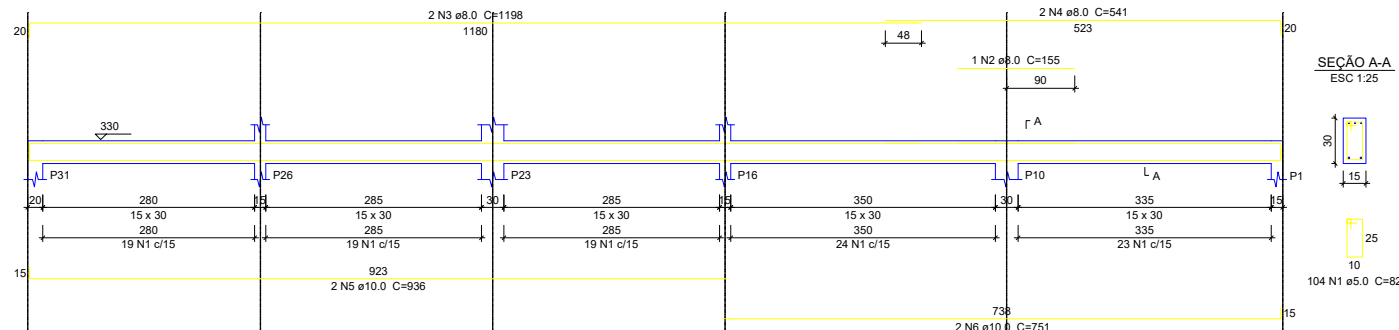
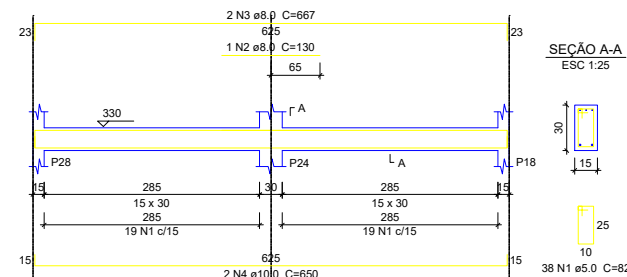


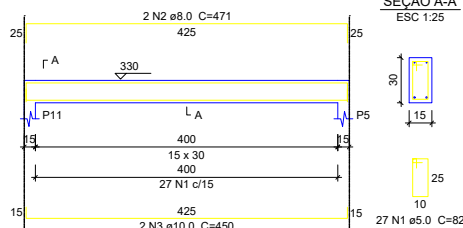
VC8
ESC 1:50



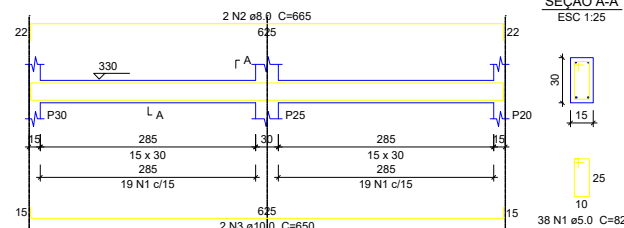
VC9
ESC 1:50



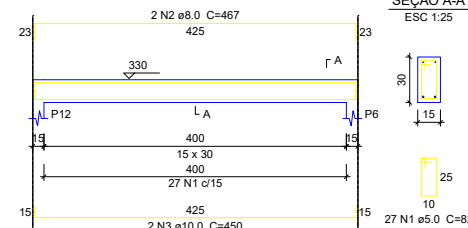
VC10
ESC 1:50



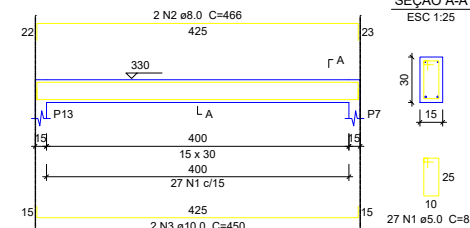
VC11
ESC 1:50



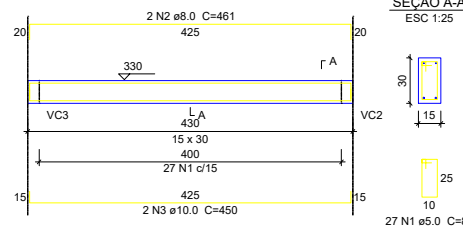
VC12
ESC 1:50



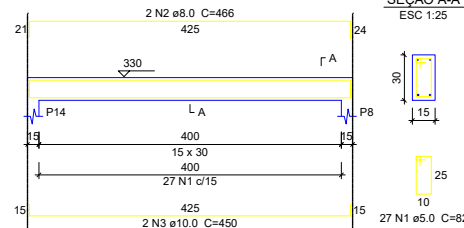
VC13
ESC 1:50



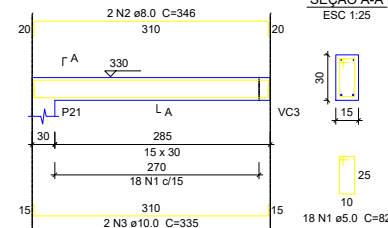
VC14
ESC 1:50



VC15
ESC 1:50



VC16
ESC 1:50



Relação do aço

ELEMENTO	AÇO	N	DIAM	Q	UNIT (cm)	C.TOTAL (cm)
VC1	CA60	1	5.0	96	82	7872
	CA50	2	8.0	2	1198	2396
	CA50	3	8.0	2	462	924
	CA50	4	10.0	2	1163	2326
	CA50	5	10.0	2	418	836
VC2	CA60	1	5.0	90	82	7380
	CA50	2	8.0	1	600	600
	CA50	3	8.0	2	1198	2396
	CA50	4	8.0	2	369	738
	CA50	5	10.0	2	1123	2246
VC3	CA50	6	10.0	2	353	706
	CA60	1	5.0	90	82	7380
	CA50	2	8.0	1	605	605
	CA50	3	8.0	2	1198	2396
	CA50	4	8.0	2	362	724
VC4	CA50	5	10.0	2	1123	2246
	CA50	6	10.0	2	353	706
	CA60	1	5.0	14	82	1148
	CA50	2	8.0	2	261	522
	CA50	3	10.0	2	250	500
VC5	CA60	1	5.0	100	82	8200
	CA50	2	8.0	2	140	280
	CA50	3	8.0	2	1198	2396
	CA50	4	8.0	2	528	1056
	CA50	5	10.0	4	828	3312
VC6	CA60	1	5.0	100	82	8200
	CA50	2	8.0	1	140	140
	CA50	3	8.0	2	1198	2396
	CA50	4	8.0	2	529	1058
	CA50	5	10.0	4	828	3312
VC7	CA60	1	5.0	168	82	13776
	CA50	2	8.0	2	1198	2396
	CA50	3	8.0	2	1200	2400
	CA50	4	8.0	2	398	796
	CA50	5	10.0	2	1016	2032
VC8	CA50	6	10.0	2	996	1992
	CA50	7	10.0	2	684	1368
	CA60	1	5.0	104	82	8528
	CA50	2	8.0	1	155	155
	CA50	3	8.0	2	1198	2396
VC9	CA50	4	8.0	2	541	1082
	CA50	5	10.0	2	936	1872
	CA50	6	10.0	2	751	1502
	CA60	1	5.0	38	82	3116
	CA50	2	8.0	1	130	130
VC10	CA50	3	8.0	2	667	1334
	CA50	4	10.0	2	650	1300
	CA60	1	5.0	27	82	2214
	CA50	2	8.0	2	471	942
	CA50	3	10.0	2	450	900
VC11	CA60	1	5.0	38	82	3116
	CA50	2	8.0	2	665	1330
	CA50	3	10.0	2	650	1300
	CA60	1	5.0	27	82	2214
	CA50	2	8.0	2	467	934
VC12	CA50	3	10.0	2	450	900
	CA60	1	5.0	27	82	2214
	CA50	2	8.0	2	466	932
	CA50	3	10.0	2	450	900
	CA60	1	5.0	27	82	2214
VC13	CA50	2	8.0	2	461	922
	CA50	3	10.0	2	450	900
	CA60	1	5.0	27	82	2214
	CA50	2	8.0	2	466	932
	CA50	3	10.0	2	450	900
VC14	CA60	1	5.0	18	82	1476
	CA50	2	8.0	2	346	692
	CA50	3	10.0	2	335	670
	CA50	2	8.0	2	466	932
	CA50	3	10.0	2	450	900
VC15	CA60	1	5.0	18	82	1476
	CA50	2	8.0	2	346	692
	CA50	3	10.0	2	335	670
	CA50	2	8.0	2	466	932
	CA50	3	10.0	2	450	900
VC16	CA60	1	5.0	18	82	1476
	CA50	2	8.0	2	346	692
	CA50	3	10.0	2	335	670
	CA50	2	8.0	2	466	932
	CA50	3	10.0	2	450	900

Resumo do aço

AÇO	DIAM	C.TOTAL (m)	PESO (kg)
CA50	8.0	360	142.1
CA60	10.0	327.3	201.8
CA60	5.0	812.7	125.3
PESO TOTAL			
CA50	343.8		
CA60	125.3		

Vol. de concreto total (C-25) = 7.24 m³
Área de forma total = 120.6 m²

01 VIGA COBERTURA
ESC: 1/200



PREFEITURA MUNICIPAL DE
VÁRZEA GRANDE
Mais por Você. Mais por Várzea Grande.

PREFEITURA MUNICIPAL DE VÁRZEA GRANDE

Av. Castelo Branco, Espaço Municipal, 2500 - Centro Sul, Várzea Grande/MT CEP 78125-700 - Fone/Fax: 65 3688 8000

PROJETO:

PROJETO ESTRUTURAL

OBRA:

**REFORMA E AMPLIAÇÃO
EMEB ANTONIA FELIPA DE CAMPOS MARTINS**

LOCALIZAÇÃO:

**RUA SD, S/Nº, QUADRA 100, BR 163
BAIRRO: JARDIM NOVO MUNDO**

AUTOR DO PROJETO:

PEDRO HENRIQUE FRANÇA ROCHA
ENGENHEIRO CIVIL CREA-MT 046214

UNIDADE:

METRO

ESCALA:

Indicada

DATA:

JUNHO/2022

FOLHA N°

06/13